

Legend

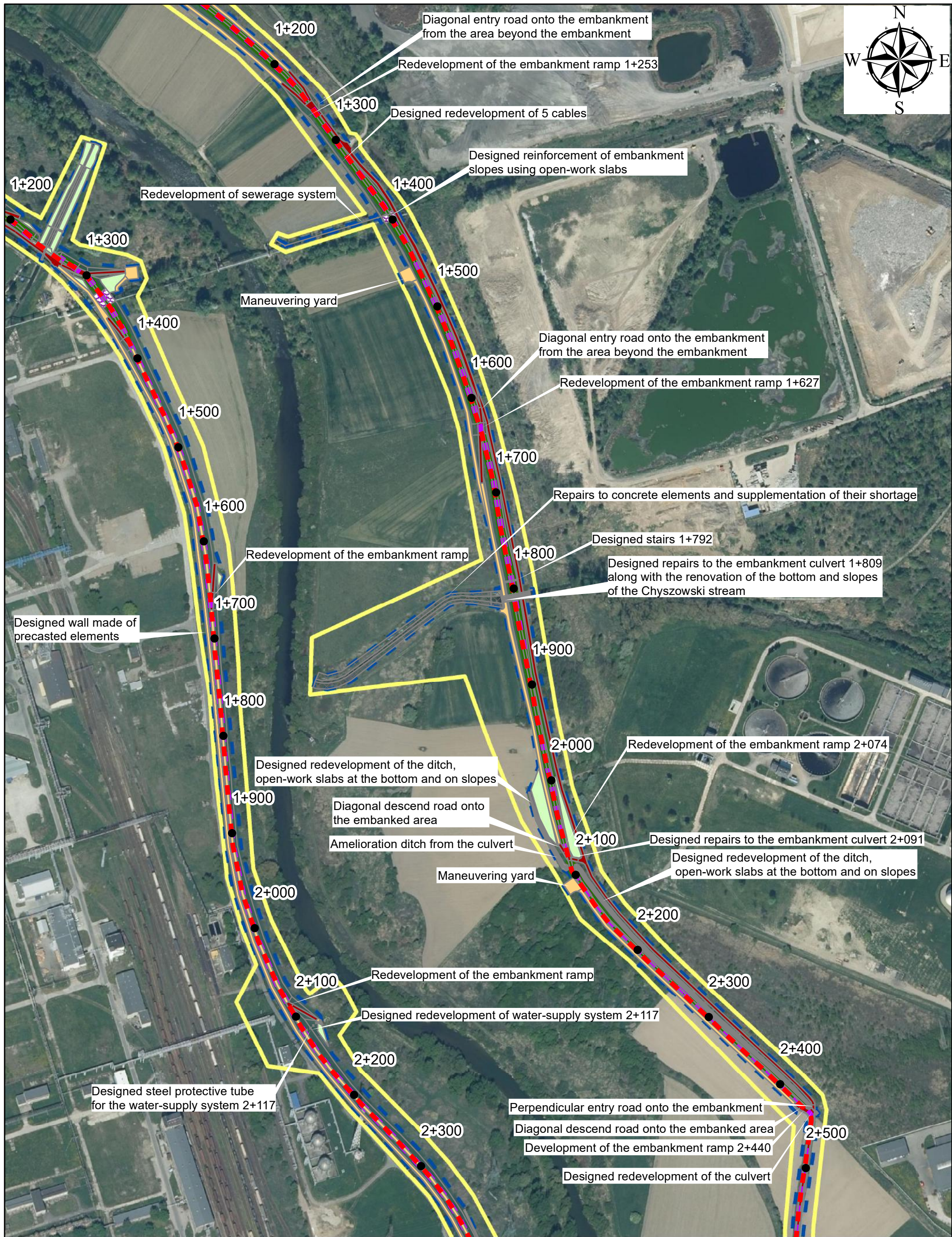
- - - Axis of embankment
- - - - - Contract 3D.2/1
- - - - - Scope of decisions on environmental conditions

Appendix No. 10: Map with location of elements of the Contract

3D.2/2 Expansion of the left and right embankment of the Biala River in the Tarnow Municipality and the City of Tarnow

00.51km

INDEX OF SHEETS	
SHEET 1	SHEET 4
SHEET 2	SHEET 5
SHEET 3	SHEET 6



Legend

- Mileage of the embankment
- Axis of the embankment
- Designed embankment
- ▨ Completing the losses of existing concrete
- Hardening with crushed stone

- Anti-filtration membrane
- ▨ Strengthening with grasscrete
- Leveling of land - sowing grass
- Securing the slope with a geogrid

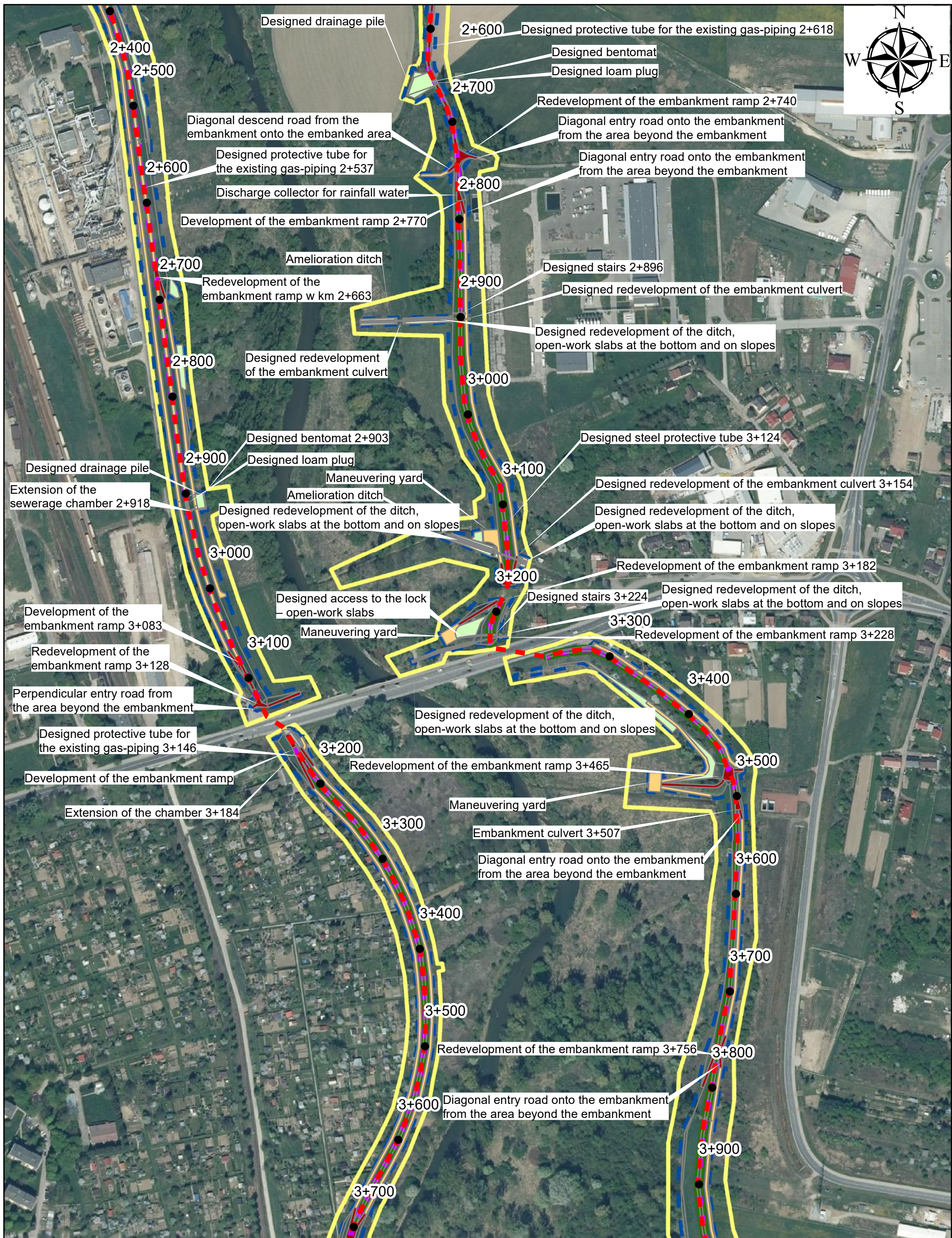
- Hardening with concrete slabs
- Designed sowing grass
- Investment boundary
- Environmental Conditions

0 0,1 0,2 km

Appendix No. 10: Map with location of elements of the Contract

SHEET 2

3D.2/2 Expansion of the left and right embankment of the Biala River
in the Tarnow Municipality and the City of Tarnow



Legend

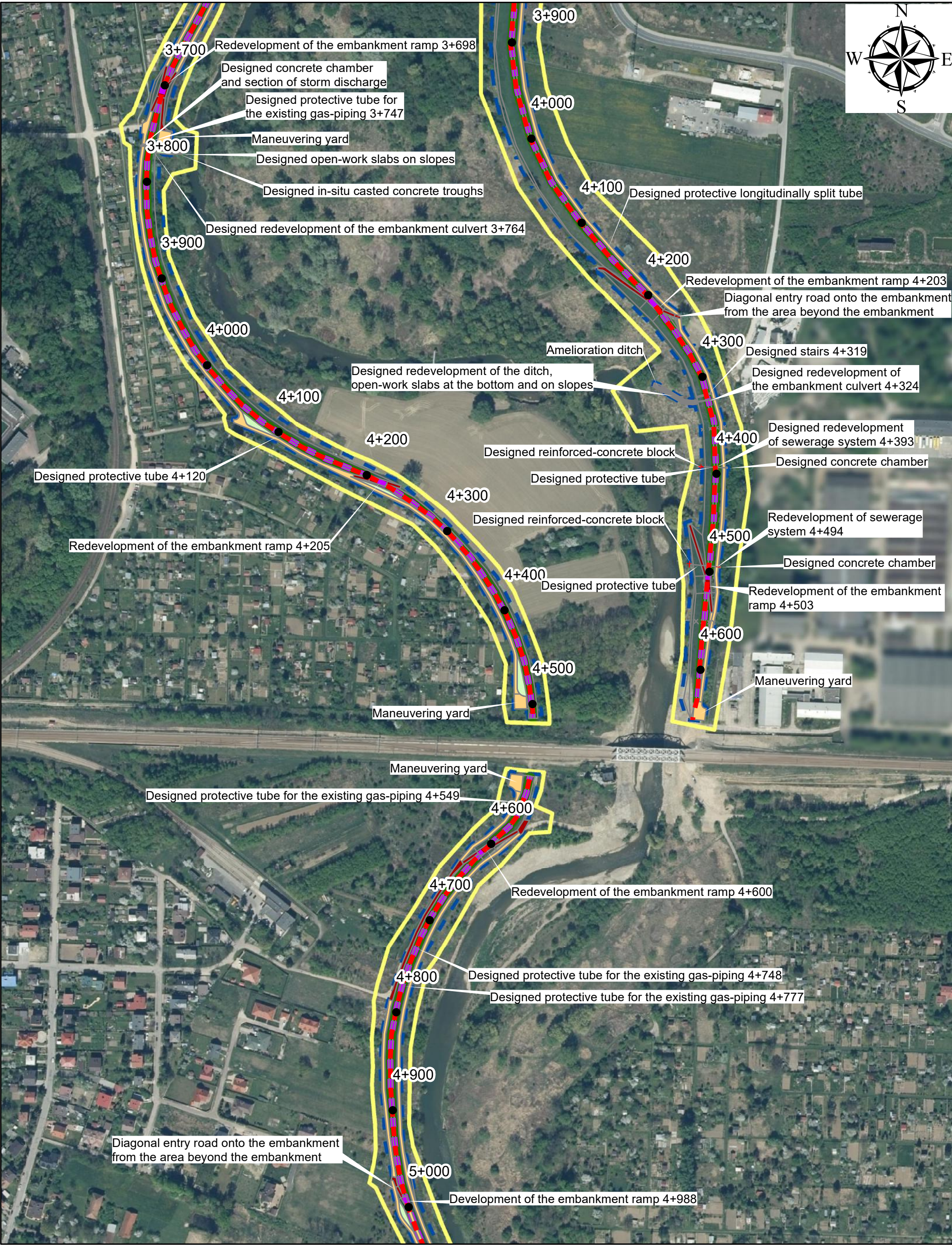
- Mileage of the embankment
- Axis of the embankment
- Designed embankment
- ▨ Completing the losses of existing concrete
- Hardening with crushed stone
- Anti-filtration membrane
- ▨ Strengthening with grasscrete
- Leveling of land - sowing grass
- Securing the slope with a geogrid
- Hardening with concrete slabs
- Designed sowing grass
- Investment boundary
- Environmental Conditions

Appendix No. 10: Map with location of elements of the Contract

SHEET 3

0
0,1
0,2 km

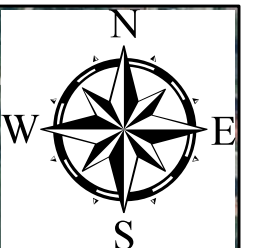
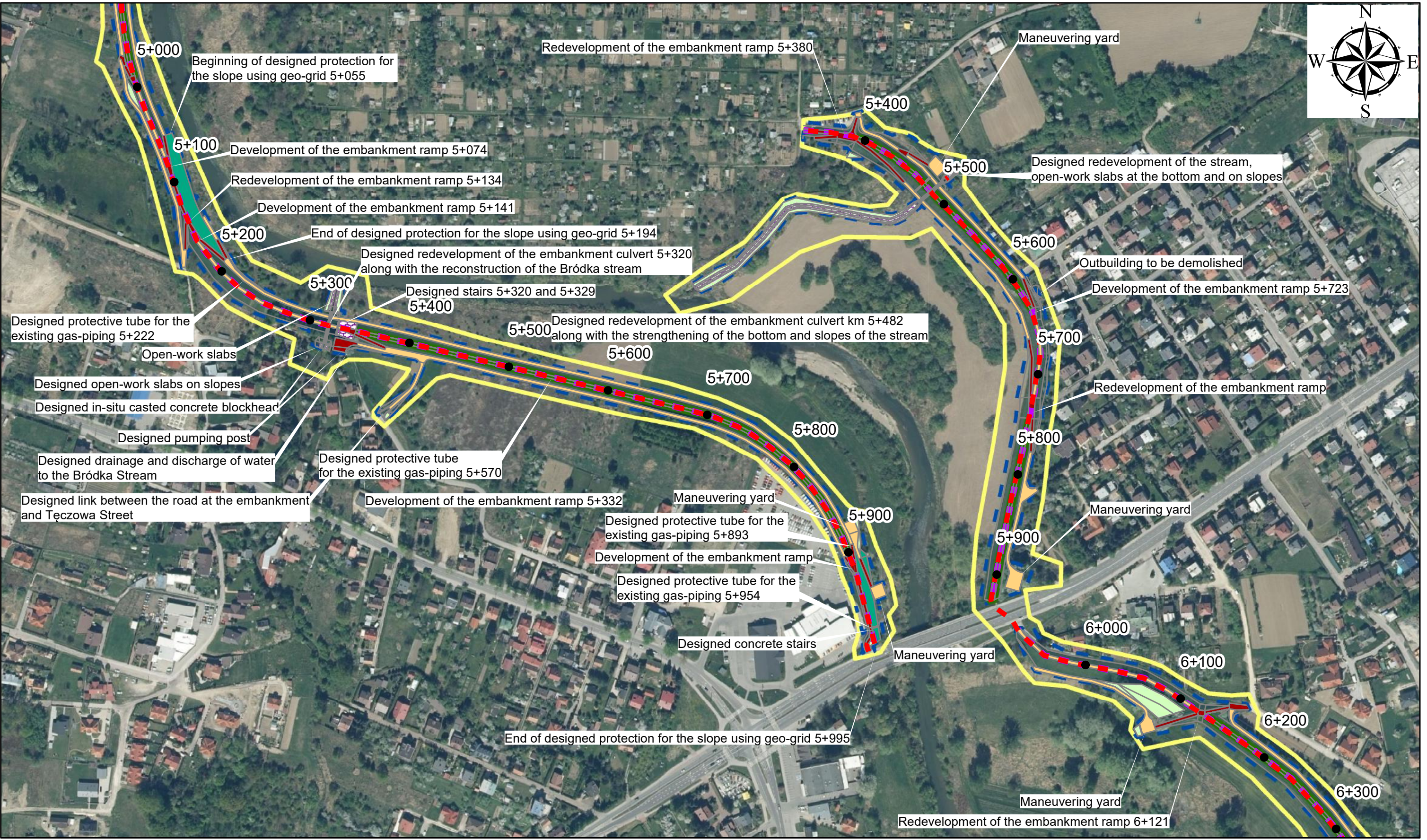
3D.2/2 Expansion of the left and right embankment of the Biala River
in the Tarnow Municipality and the City of Tarnow



Legend

- Mileage of the embankment
- Axis of the embankment
- Designed embankment
- ▨ Completing the losses of existing concrete
- Hardening with crushed stone
- Anti-filtration membrane
- ▨ Strengthening with grasscrete
- Leveling of land - sowing grass
- Securing the slope with a geogrid
- Hardening with concrete slabs
- Designed sowing grass
- Investment boundary
- Environmental Conditions

Appendix No. 10: Map with location of elements of the Contract
SHEET 4
0 0,1 0,2 km
3D.2/2 Expansion of the left and right embankment of the Biala River
in the Tarnow Municipality and the City of Tarnow



Legend

● Mileage of embankment	■ Anti-filtration membrane	■ Hardening with concrete slabs
--- Axis of the embankment	■ Strengthening with grasscrete	■ Designed sowing grass
— Designed embankment	■ Leveling of land - sowing grass	— Investment boundary
■ Completing the losses of existing concrete	■ Securing the slope with geogrid	— Environmental Conditions
■ Hardening with crushed stone		

Appendix No. 10: Map with locatin of elements of the Contract

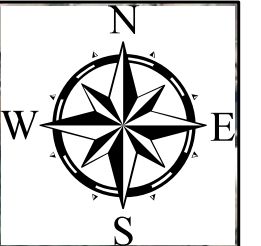
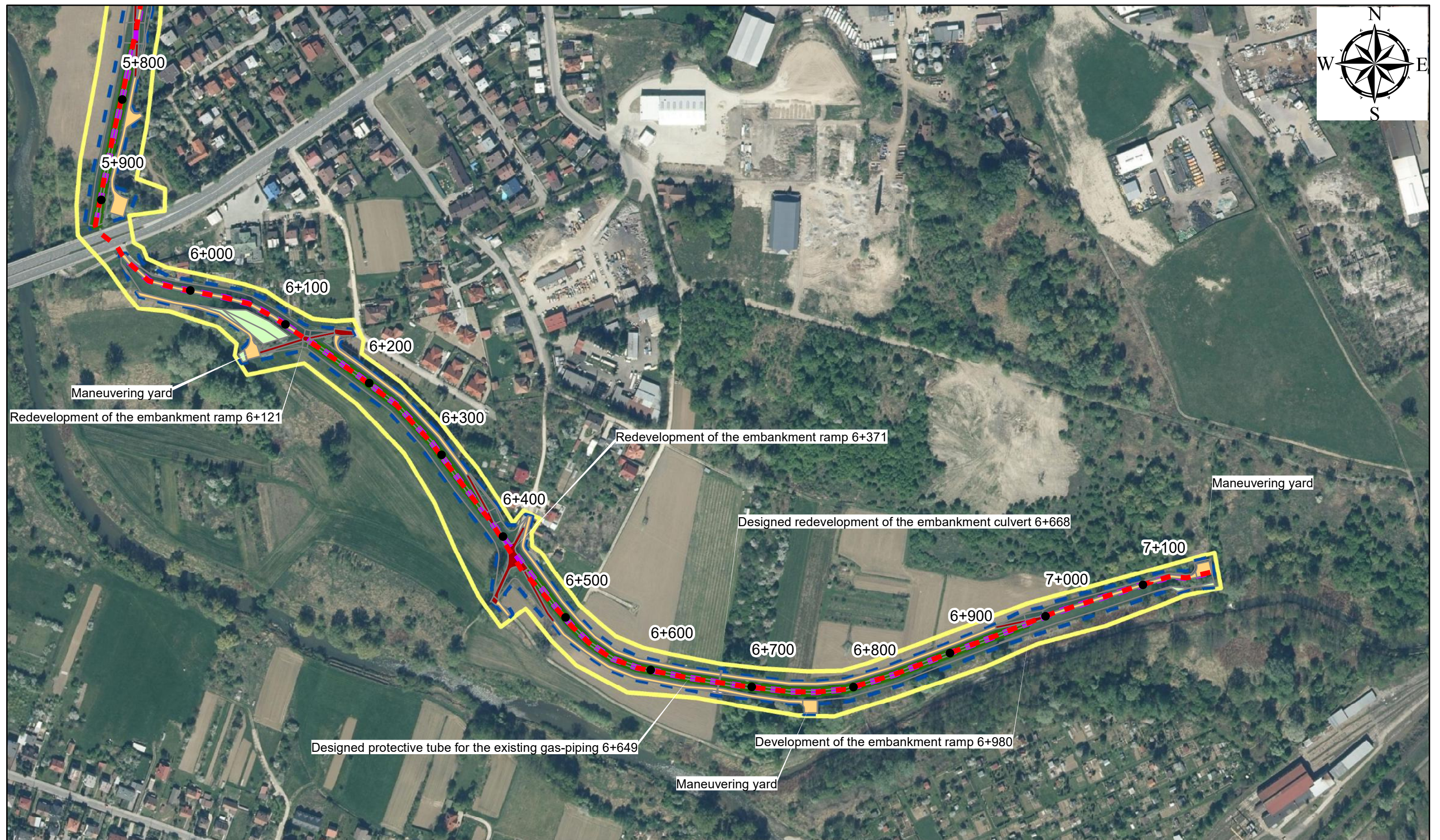
SHEET 5

3D.2/2 Expansion of the left and right embankment of the Biala River in the Tarnow Municipality and the City of Tarnow

0

0,1

0,2 km



Legend

- | | | |
|--|-------------------------------------|---------------------------------|
| ● Mileage of embankment | ■ Anti-filtration membrane | ■ Hardening with concrete slabs |
| — Axis of the embankment | ■ Strengthening with grasscrete | ■ Designed sowing grass |
| — Designed embankment | ■ Leveling of land - sowing grass | ■ Investment boundary |
| ■ Completing the losses of existing concrete | ■ Securing the slope with a geogrid | ■ Environmental Conditions |
| ■ Hardening with crushed stone | | |

Appendix No. 10: Map with location of elements of the Contract SHEET 6

3D.2/2 Expansion of the left and right embankment of the Biala River
in the Tarnow Municipality and the City of Tarnow

